

Digital Cabinets Roll-Through Compact Refrigerator 750 lt - 1 Full, 1 Glass door

ITEM # _____

MODEL # _____

NAME # _____

SIS # _____

AIA # _____

**725098 (RI075R2FGT)**

1-full and 1-glass door Roll-through Refrigerator,
750lt, +2+10°C, AISI 304,
R290

Short Form Specification

Item No. _____

External and internal in AISI 304 stainless steel. Insulation thickness mm60. One right hinged full door and one glass door with lock and internal light. Built-in refrigeration unit; ventilated operating mode; digital control; evaporator; automatic defrost; external digital temperature display; high/low humidity switch; internal lighting. Operating temperature +2+10°C. For ambient temperatures up to 43 °C. CFC and HCFC free. R290 gas in refrigeration circuit.

Main Features

- Ventilated cooling for optimal temperature distribution.
- Lift-up control panel to better access main components.
- Interior light and lockable door.
- Digital control panel with temperature display.
- The operating temperature can be adjusted from +2 to +10°C to suit both meat and dairy storage requirements.
- Automatic defrost and automatic evaporation of defrost water.
- One full door and one glass door.
- Suitable for all kinds of 18 shelves GN 1/1 trolleys, designed to fit the 18 shelves GN 2/1 trolley available as optional accessory.
- Complies with main international certification bodies and is CE marked.
- Inner side protectors to protect the internal walls.
- Right hinged glass door.
- Adjustable bottom door gasket.
- Simple cooling unit easily accessible from the rear of the appliance.
- Tropicalized unit.

APPROVAL: _____

Construction

- Evaporator and fan are placed outside the cell to provide the maximum storage capacity.
- Lockable door.
- Evaporator cover is easily removable for service.
- Developed and produced in ISO 9001 and ISO 14001 certified factory.
- Built-in compressor to suit operating conditions.
- Electrical connection: 220-240V-single phase 50HZ or 220-240V-single phase 60HZ.
- Interior cell and external panel are constructed in 304 AISI stainless steel.
- External panels are in AISI 304 stainless steel for higher level of hygiene.

User Interface & Data Management

- Connectivity ready for real time access to connected appliances from remote and data monitoring (requires optional accessory).
- Large digital white-digit display with humidity selection button (3 preset level), internal temperature display and setting, manual activation of defrost cycle and turbo frost cycle (to rapidly cool warm loads).

Sustainability



- CFC and HCFC free, highly ecological refrigerant type: R290 (ecological gas in foam: cyclopentane). Hydrocarbon refrigerant gas R290 for the lowest environmental impact (GWP=3), to reduce green house and ozone depletion effects.
- Finished in top quality materials to ensure durability.
- CFC and HCFC-free insulation.
- Cabinet fitted with up to 60 mm thickness of Cyclopentane insulation for best insulating performance (thermal conductivity: 0,020 W/m*K). CFC and HCFC-free insulation.

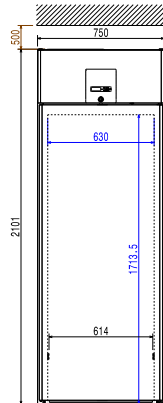
Optional Accessories

- Insulated floor-ramp for 750lt Roll-in Pass-through Refrigerator PNC 881279 ☐
- Ethernet connector for IR33 (CAREL) Refrigerated Cabinets and Counters PNC 881299 ☐
- Trolley 18x2/IGN for roll-in 750lt PNC 881521 ☐

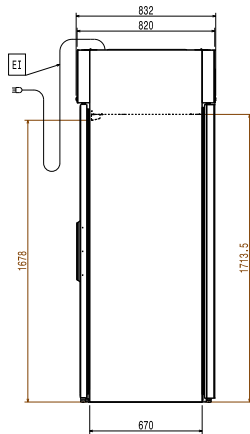
Recommended Detergents

- S01 STAINLESS STEEL SURFACE POLISHER; 6 BOTTLES X 750ML C/T PNC 0S2881 ☐
- S05 - MULTIPURPOSE DEGREASER; 6PCS X 750ML; ADR&IMDG Limited Quantity PNC 0S3257 ☐

Front

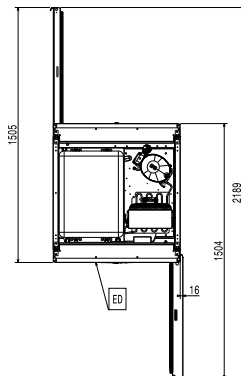


Side



EI = Electrical inlet (power)

Top



Electric

Supply voltage: 220-240 V/1 ph/50 Hz
 Predisposed for: 220-230 V 60 Hz

Key Information:

Door hinges:
 External dimensions, Width: 750 mm
 External dimensions, Depth: 832 mm
 External dimensions, Height: 2101 mm
 Number and type of doors: 2 Full;Glass
 External side panels: 304 AISI
 External top panels: 304 AISI
 External door material: Glass
 Internal panels material: 304 AISI

Refrigeration Data

Operating temperature min.: 2 °C
 Operating temperature max.: 10 °C
 Compressor power: 1/3 hp

ISO Certificates

ISO Standards: ISO 9001; ISO 14001; ISO 45001; ISO 50001

Sustainability

Refrigerant type: R290
 Refrigeration power: 520 W
 Refrigerant weight (unit 1): 150 g